

# Episode 24

Autumn 2019



Kriss, p. 4

## Summary

- ◆ Editorial ..... 2
- ◆ Recent Sales ..... 3
- ◆ Brokerage News ..... 4
- ◆ Ice Yachts Agent ..... 12
- ◆ New Construction ..... 13
- ◆ Sales Index ..... 14
- ◆ Racing Index ..... 18
- ◆ Charter ..... 19
- ◆ Charter Index ..... 30
- ◆ Upcoming Events ..... 35
- ◆ BGYB Contact ..... 36



Atlantic, p. 7



BROKERAGE



RACING



CHARTER

*Exhibited at the  
Cannes Yachting Festival 2019*

Blue Diamond, p. 9



135ft Sir Norman Foster Design OCEAN SAPPHIRE, p. 5



Photo Richard Sprang

Bernard Gallay

## The Yacht Market Overview

### Sales

BGYB's year was kicked off with the sale of 104ft S/Y Sloop **OCEAN SEVEN**<sup>2</sup>. A particularly nice start to 2019 on familiar ground, this being the 2nd time in recent years that BGYB was chosen to represent **OCEAN SEVEN**<sup>2</sup> during a commercial deal. Shortly after, followed the sale of 121ft S/Y Ed Dubois Sloop **DAMAHWIL**. On both occasions BGYB successfully acted on behalf of both buyer and seller throughout sale proceedings.

We were delighted to show off two of our listings in the May 2019 Palma Superyacht Show. 100ft S/Y Carbon Sloop **BLUE DIAMOND** and 72ft S/Y Reichel Pugh 72 **ARAGON** both proved popular with clients and superbly exhibited the caliber of yacht listed at BGYB.

Following the year's early successes, the start of the summer created a buzz in the market, bringing new opportunity to the BGYB Sales Department. Consecutive months of May, June and July saw consecutive sales; first a deal was made on the 100ft Super Maxi **LEOPARD 3**, then 73ft Wally **WALLY ONE** and finally 84ft S/Y Fitzroy Sloop **NEPTUNE**.

One of BGYB's most exciting new endeavours, is our upcoming collaboration with Italian ship-yard, ICE Yachts. We are proud to announce the next launching of the construction of the brand-new **ICE 70** which will be designed by none other than Felci Yacht Design.

Amongst our recent sales listings, 125ft S/Y Classic Gaff Cutter **MARIQUITA** has fast become a celebrated asset and elsewhere 85ft S/Y Aegan Schooner **SMART SPIRIT**, S/Cat Ice Cat 61 **SILLY CAT** and 71ft S/Y Garcia Ketch **ENTHALPIA** have all made an impression on the sales market.

The sales department continues to strengthen their listings further. We first welcome S/Cat Moxie 61 **TOSCA** by VPLP, this luxury catamaran has been re-energized thanks to an exquisite \$400K refit in 2019. Secondly, the classic motor yacht 54ft Commuter Andreyale 52 **DONAA**, a new, unique and fashionable listing which brings something different to the BGYB portfolio.

Not only are we growing in depth of fleet but also in our global reach. BGYB has recently established itself on the Oceania continent upon the opening of our Auckland office. Furthermore, as Palma continues to emerge as the new Holy Grail for yachting in this part of the world, BGYB looks to intensify its presence in the area. Our proposed new Palma office will allow us to always keep

a watchful eye on the many mega sailing yachts and motor yachts which increasingly grace the Balearic ports. Elsewhere, the opening of our Port-Napoléon office close to Marseille is being commissioned to specifically focus on the "60 feet plus" yacht market, giving the advantage of long-term dry-docking facilities.

The Cannes Yachting Festival 2019 will give BGYB the opportunity to exhibit two yachts. Firstly, following its success in the Palma Superyacht Show, **BLUE DIAMOND** will once again accompany the BGYB team, this time to Cannes where we will hope to welcome you on board. S/Y 90ft Holland Jachtbuuw **WHIRLWIND** will be anchored not far from the port, where attendees will be invited to join us via a tender for viewings.

BGYB's exciting new website is getting closer to completion. New features and information pages are in the process of being perfected to create the ideal platform for clients, owners, brokers and our partners.

### Charter

As the curtain begins to draw on a very busy BGYB summer charter season, we are left with memories from a series of superb charters.

The theme of the summer seemed to be - *Where To Next?* As BGYB charters became more creative and experimental with their summer destinations than ever before. From the Cote d'Azur to the Grenadines, to Rome, to Turkey, to Montenegro and Croatia and beyond; this summer has been a summer for exploration, relaxation and daring to go further.

We begin by announcing the enchanting charter opportunity which awaits 100ft Maxi Dolphin S/Y **NOMAD IV**. Following an ambitious around-the-world trip, the yacht will be available for charters in the French Polynesia from April 2020.

In further news, after the successful sale of 73ft S/Y **WALLY ONE**, the iconic **WALLY** will be undergoing a complete refit in 2019/2020 and will return afresh and ready to take charters with BGYB from June 2020.

It was indeed another fruitful season for 135ft M/Y **OCEAN SAPPHIRE**. The luxury motor yacht, designed by celebrated architect Sir Norman Foster is perfectly suited to hosting the ideal events charter; she is an attractive prospect for those hoping to charter during the 2020 Cannes Film Festival, Monaco Grand Prix and MIPIM.

BGYB will be making its mark in the Caribbean during the 2019/2020 Winter Season. Two of our popular

catamarans, 78ft S/CAT **TAJ** and 58ft Ipanema 58 S/Cat **ARAOK** as well as the luxury high class 100ft S/Y Wally **DARK SHADOW** will be available in the region.

The enduring fashionability of the catamaran in the charter sphere was particularly evident this summer and demand was high for this style of boat in our Charter Department. Newcomers, **ARAOK** and **TAJ**, this season chartering approximately 4500 nautical miles apart in the Mediterranean and the Caribbean, proved as popular as anticipated. Our veteran charter catamarans: 82ft **MAGIC CAT**, 62ft Lagoon 620 **MELARNIE** and 50ft **CURANTA CRIDHE**, were equally kept busy with back to back bookings throughout July and August.

We are grateful for the work of our fantastic captains and crews aboard all of the BGYB boats this summer, with 70ft S/Y **ENTHALPIA**, **ARAOK**, **MELARNIE**, 79ft S/Y **GENIE** and 90ft Sloop **WHITEFIN** receiving some particularly outstanding feedback and comments. "*Beyond expectation*", "*perfect*", "*Magique*", "*The Reality far surpassed the dream*" to name but a few.

High performance yachts, ideal for racing charters have been an ever-growing sector in the BGYB Charter Department. 82ft S/Y **AEGIR** embarked on an unprecedented three racing regattas over the summer, raking in success after success in the Transatlantic Race, Fastnet and the Rolex Middle Sea Race. Elsewhere, 62ft S/Y Ice 62 **SUENO** placed first in the 2019 Caprera Cup whilst further afield, 77ft S/Trimaran **ULTIM EMOTION** is currently available for racing charters in the Caribbean.

We aspire to continue stretching the scope of our charter destinations with some of our yachts already choosing new charter regions for 2020. **MELARNIE**, 159ft M/Y **THE MERCY BOYS**, 96ft S/Y **MARGARET ANN** and 171ft M/Y **HALAS** will all be looking east for charters in the Adriatic, Croatia, Montenegro, Malta, the East Coast of Italy and Turkey. 159ft mega sailing yacht **DWINGER** will be available for charters in the Balearics. Finally, back in the West Mediterranean, the dream Italian charter yacht 79ft S/Y **ELISE WHISPER** will remain devoted to her roots, chartering in Sardinia and the Italian Riviera whilst 82ft S/Y **KALLIMA** is all set to take bookings for 2020 in Corsica and France.

BGYB is welcoming all charter enquiries for Winter 2019/2020 and Summer 2020. We very much look forward to hearing from you.

## ◆ BROKERAGE NEWS - Recent Sales ◆



### 100ft Super Maxi "LEOPARD 3"

2007. Leopard is arguably the most high profile racer cruiser yacht in existence. This speed machine has a history of trophy hunting and record breaking around the world and represents a pinnacle in the evolutionary timeline of super maxi development.



### 84ft Fitzroy Yachts "NEPTUNE"

2004. Refit 2017. She is now back in turnkey condition and in compliance with the commercial French Registry.



### Wally 83 "WALLY ONE"

WALLY ONE is the first ever Wally Yacht. As has been the case with each Wally Yacht, the design was very ahead of its time when it was launched in 1991, and revolutionised the Superyacht World.



148ft Abeking & Rasmussen

# KRISS

**1974 – Refit 2017.**

**KRISS (ex NO LO SE – ex SHARK) is an exciting amalgamation of comfort, luxury and technology.** She is thoroughly classic in her design, but modern in construction and engineering.

She features 3-decks, a raked bow and transom stern. Having undergone several major refits (2001 & 2017), almost all that remains of the original yacht are the strong hull and the main engines. She is a true Gentleman's yacht with pedigree, maintained in immaculate turnkey condition by the same Captain/Manager since 2000. KRISS is ready to cruise anywhere in the world. She has more than a transatlantic range capability.

**Year built/refit :** 1974/2017

**Builder :** Abeking et Rasmussen

**Naval architect :** J. H. F. Rogers

**Classification :** Lloyds

**Flag :** Malta

**Length :** 45 m

**Beam :** 7.47 m

**Draft :** 3.30 m

**Material :** Steel

**Engine :** 2 x 1,050 HP Carterpilard

**Speed :** 12.5 knots

**Range :** 4,500 nm

**Generator :** 2 Carterpilard

**Fuel capacity :** 57000 L

**Water capacity :** 12000 L

Photos © Arthur Leblanc



175ft Steel/Aluminium Displacement Motor Yacht

# SANSSOUCI STAR

**1982. A yacht of quality German construction, SANSSOUCI STAR is a strong, reliable steel motor yacht with the capacity for transatlantic crossings.**

She accommodates up to 20 guests in 9 cabins and up to 12 crew in 6 cabins. She is one of the few yachts of her type still available, and has great potential for family cruising and charter.



## ◆ BROKERAGE NEWS - Motor Yacht ◆



135ft Sir Norman Foster Design

## OCEAN SAPPHIRE

**OCEAN SAPPHIRE** is a luxury motor yacht designed by world-renowned architect Sir Norman Foster and built by the Italian shipyard **Rodriquez Cantieri Navali**.

She has four deck levels, offering more exterior and interior space than any other yacht in her category. Special attention has been paid to the quality of light and the views from all areas of the yacht, including the Master suite's two private balconies. The interiors have been furnished with great attention to aesthetics, practicality and luxury.

Taking advantage of the floor-to-ceiling windows and panoramic views, a sense of continuity between the exterior and interior spaces has been intuitively created.

<b>Year:</b>	2010
<b>Designer:</b>	Foster and Partners
<b>Builder:</b>	Rodriquez Cantieri Navali
<b>Type:</b>	Signature 40 Aluminium Displacement Motor Yacht
<b>Length:</b>	41 metres
<b>Beam:</b>	8.40 metres
<b>Speed:</b>	12 to 16 knots
<b>Number of cabins:</b>	5 for up to 12 guests



Photos © Nigel Young/Foster + Partners



## 125ft Classic Sailing Yacht MARIQUITA

**MARIQUITA is widely regarded as one of the most beautiful classic yachts sailing today.**

Designed and built for industrialist Arthur Stothert by William Fife III she was launched in 1911 at Fairlie on the Clyde river in Scotland. As a gaff rigged cutter of the 19 Metre Class MARIQUITA is a direct link to the historic Big Class and a precursor to the J-Class that would follow in the 1930's.

When launched, MARIQUITA caught the imagination of everyone that followed sailing just before the First World War and, over a hundred years later, she still does, having been entirely restored by Fairlie Restorations in 2003 following the highest standards in wooden construction. The same year she set sail once again and is now one of the stars of the Classic Circuit. Over the last decade she has sailed on the Clyde, and at Cowes, Falmouth, and countless Mediterranean regattas including Monaco Classic Week, Regates Royales de Cannes and Les Voiles de Saint-Tropez.

She represents a unique opportunity to enter into the exclusive classic sailing yacht circuit and enjoy the excitements of racing on such a legendary magnificent yacht.

She also offers great comfort and refined interior accommodation for cruising in the Mediterranean Sea or elsewhere.

Winning the Panerai Big Boat Mediterranean Series in 2014 and the UK Series in 2015.

**Year:** 1911

**Designer:** William Fife III

**Builder:** W. Fife & Son, Fairlie

**Type:** First International Rule 19 Metre

**Length:** 38.10 metres

**Beam:** 5.30 metres

**Sail area:** 6,171 sq ft upwind

**Keel:** 36 ton of lead

Photos credit Ben Wood



# 212<sup>ft</sup> New Classic Schooner ATLANTIC

**2010. She is the replica of legendary ATLANTIC which was commissioned in 1903. Her victorious 1905 Transatlantic Race made her immortal in yachting history.**

After owning, restoring, rebuilding or recreating a number of famous yachts such as Thendara, Aile Blanche, Borkumriff, Zaca a te Moana and most recently Eleonora, her owner planned his ultimate masterpiece; with her overall length of 64.5 metres she is the largest classic racing schooner ever to be recreated. Above all else, she, like her inspiration, remains breathtakingly beautifully, turning heads wherever the wind takes her.

Her dimensions are simply incredible; overall, she measures a remarkable 64.5 m. Her graceful sheer line and long overhangs accentuate her grace while her waterline length of 42 m and narrow beam are a promise of unmatched speed under sail. Her spars tower some 45 m above the waterline and support a staggering area of 1,750 m<sup>2</sup> of sail, more than two and a half times that of the already awesome J-Class yachts.

<b>Type:</b>	Classic Yacht
<b>Model:</b>	3-Mast Schooner
<b>Length:</b>	64.5 m
<b>Beam:</b>	8.85 m
<b>Draft:</b>	5.00 m
<b>Material:</b>	Steel
<b>Engine:</b>	YANMAR - 555 kW
<b>Speed:</b>	12 knots
<b>Range:</b>	1,900 nm
<b>Generator:</b>	2
<b>Fuel consumption:</b>	80 L/H
<b>Fuel capacity:</b>	12,000 L
<b>Water capacity:</b>	1,600 L





90ft Garcia Fast Cruiser with lifting keel  
**ZURBAGAN**

2006. ZURBAGAN won the SuperYacht design awards when launched in 2007 in the Sail 23m-36m category. Designed by Gilles Vaton and Couedel Hugon Design, she is an outstanding yacht, laid-out for fast cruising.

Her hull as well as her annexes are identical to L'Oreal's (current around the world record holder from East to West), the mast has been moved back allowing to minimize the pitching. ZURBAGAN expresses purity, sobriety and elegance. With her pure lines, a smart form sculpted for speed. A really low canopy and completely uncluttered deck made for competition and fast cruising in total safety and the contemporary interior design offers a very good combination of comfort and performance.



Photos © Stuart Pearce



Reichel Pugh 72  
**ARAGON**

2006. Reichel Pugh design built in carbon Nomex by Yachting Developments, ARAGON ex Pinta 05 is a fantastic cruiser racer with outstanding performances for the Mediterranean conditions. The most advanced concepts of pre-preg carbon fibre materials were used, resulting in a hull, deck and structure that meets the high standard that all racing yachts from the drawing board of Reichel Pugh are renowned for. This ensures lightweight characteristics and complements a hull shape that contributes to a swift and agile, yet comfortable and robust ride.



Photos © C. Jouany - M. Gramm



Exhibited at the  
Cannes Yachting Festival 2019



## 100<sup>ft</sup> Gilles Vaton Design BLUE DIAMOND

2004. Designed by Gilles Vaton and built by JMV & H2X, the Sailing Yacht BLUE DIAMOND is a great cruiser-racer combining five star comfort and high performances, both for blue water cruising or on the Super Yacht racing circuit! Her luxury interior can accommodate up to eight guests in 4 double cabins with ensuite bathrooms, around a wide saloon and dinner table, well isolated from the galley and the crew quarters, and offers a safe and protected cockpit, separated from the maneuvering area, which features an open transom inviting to the ocean. The flush deck, sleek lines and powerful rig invite for sensational sailing in all conditions! Launched in 2004, BLUE DIAMOND is built of Carbon Fiber, rigged with a Lorima 4 spreaders mast and a wide range of sails. She features a lifting keel to allow shallow access, and has been maintained by a professional crew and a dedicated Owner at the highest level!

Photos © Jesus Remede

<b>Builder:</b>	JMV
<b>Naval architect:</b>	Gilles Vaton
<b>Interior designer:</b>	Gilles Vaton
<b>Flag:</b>	UK
<b>Length:</b>	30.35 m
<b>Beam:</b>	6.99 m
<b>Draft:</b>	5.50 m
<b>Material:</b>	Carbon / Nomex
<b>Engine:</b>	CUMMINS 6CTA 224 Kw
<b>Speed:</b>	10 knots
<b>Generator:</b>	ONAN MDKBV 19 KW
<b>Fuel capacity:</b>	3000 L
<b>Water capacity:</b>	1100 L





118<sup>ft</sup> Ocean Going Motor Sailer  
**QUEEN SOUTH III**

**1999 – Refit 2013.** QUEEN SOUTH III has a well-equipped interior, featuring high quality wood finishes from Viareggio Italy. Her interior highlights the finest Italian craftsmanship. Her graceful clipper bow and lovely lines belie the capability of this robust blue water cruiser. Equally suitable for worldwide cruising, QUEEN SOUTH III is an excellent yacht for family cruising or yacht charters alike. She has an extensive list of equipment including 2 stabilisers.

This single-family-owned yacht has been consistently maintained to the highest standard. QUEEN SOUTH III underwent a 2-phase complete refit in 2012 and 2013 at Rybovich Spencer Shipyard in Florida and the Hinckley Shipyard in Rhode Island.



Photo © Gary Felton



94<sup>ft</sup> Andre Hoek Sloop  
**WHIRLWIND**

**1998.** Designed by Andre Hoek and built by Holland Jachtbouw, WHIRLWIND is a fully equipped family-owned sailing yacht.

She has been well maintained since launched. Her 2 latest yard periods in 2007/2008 and in 2017 have ensured that she has maintained her enviable reputation as a yacht of outstanding quality.



Photo © BGYB

## ◆ BROKERAGE NEWS - Sailing Yacht ◆



100ft Finot Conq Design  
**nomad IV**

**2013. NOMAD IV is a fantastic sailing yacht, designed by the famous architects Finot Conq. She is a new concept of large sailing yachts with a high freeboard, huge beam and sail area allowing her unequalled sailing performances as well as tremendous spaces for the accommodation.**

She is particularly comfortable thanks to her length and her equally large interior and exterior spaces.

Her lateral ballasts mean she can sail almost flat and a lifting keel permits entry into a variety of ports and anchorages. Her large cockpit with 2 tables, each capable of seating up to 12, is ideal for relaxed dinners on board, and the ample sunbathing space permits owners and guests to soak up the rays in total comfort. Her deck saloon has stunning 360° panoramic views.  
*Also available for charter.*

**Year built / refit:** 2013

**Builder:** Maxi Dolphin

**Naval architect:** Finot Conq

**Flag:** Malta

**Length:** 30.48 m

**Beam:** 8.30 m

**Draft:** 3.50-5.90 m

**Material:** Carbon

**Engine:** Yanmar 370CV - 213 Kw

**Speed:** 10 - 11 knots

**Range:** 3500 nm

**Generator:** 2 x Fischer PANDA, 24 Kw

**Fuel consumption:** 30l/h - engine  
 + 20l/h - generator

Photos © Richard Sprang



## ICE YACHTS, Italian style meets blue water sailing

**Blue Water sailing is a concept that encompasses a real philosophy.** The dark deep blue waters are typical of oceans, far from any shelter. ICE YACHTS designs and builds boats to navigate off-shore without limit. Born at CNG, then C.N. Yacht 2000, this premise, that has its origins in the early days of fibreglass and the expertise of its most experienced sailors, was formed at Alpa, one of the

most famous Italian boatyards of all time. Dozens of boats that were built for Blue Water cruising can still be found sailing the seas today; for example the ULDB designed by Bill Lee, or Nastro Azzuro, winner of the Columbus Celebrations in 1992, as well as the latest designs by Vallicelli and Felci.



ICE 60

EUROPEAN YACHT OF THE YEAR  
NOMINATED 2018



ICE 33 - ICE 52 - ICE 60 - ICE 72 - ICE 82 - ICE 100 - ICE Cat 61 - ICE Cat 67

## IceYACHTS

INNOVATION  
CONFORT  
ELEGANCE

*Un grand 60 pieds construit avec le soin et la qualité d'un 80, doté de la manœuvrabilité d'un 52 et offrant des aménagements avec 3 ou 4 cabines.*

### Caractéristiques techniques

Caractéristiques techniques	
Longueur hors tout :	17,99 m
Longueur à la flotaison :	16,80 m
Largeur :	5,20 m
Déplacement :	17,90 t
Tirant d'eau :	2,85 m
Grand voile :	130 m <sup>2</sup>
Génois 108% :	90 m <sup>2</sup>
Genaker :	320 m <sup>2</sup>
Moteur :	150 Cv
Réservoir d'eau :	1000 L
Réservoir de gasoil :	650 L
Construction :	Composite carbone en infusion sous vide
Mât & bôme :	carbone



Exhibited at the La Grande Motte International Multihull Boat Show 2019

MULTIHULL OF THE YEAR  
NOMINATED 2018



**ICE CAT 61**  
the breakthrough in the catamaran design

semi custom • high performances • full carbon

Official Agent:

Bernard Gallay  
Yacht Brokerage

+33 467 66 39 93 - info@bernard-gallay.com  
www.bernard-gallay.com

ICE YACHTS s.r.l. [www.iceyachts.it](http://www.iceyachts.it)

◆ NEW CONSTRUCTION - Sailing Catamaran ◆

GP 70  
SAILING YACHT  
VPLP design



New Concept  
Catamaran for Sale

**Order now and get it delivered within 12 months in 2019**

The GP70 concept is the ultimate result of the expectation of a long-term experienced yachtsman in catamaran sailing.

The GP 70 is the ideal compromise between performance and comfort to cruise around the world at unmatched average speed and in the safest environment for one's own family. Thanks to the collaboration with the world-famous multihull architects VPLP design, the GP 70 is the perfect catamaran to be enjoyable to sail in any circumstances, and thrilling to race into the breeze at up to 30 knots!

The comfort and the functionality of the accommodation are another priority, and the GP 70 offers a wide and bright saloon with the galley opening to the aft cockpit table, and accommodation for up to 8 guests and 2 crew.

Very well rigged with powerful sails, the GP 70 remains nonetheless accessible to all passionate sailors with a small crew of just two!

The hulls and superstructure are ready to be put together, waiting for you to take the GP 70 over and to adapt her to your own wishes.

<b>Length overall</b>	21.00 m
<b>Beam</b>	9.75 m
<b>Draft</b>	1.45/3.90 m
<b>Displacement</b>	22 t (at full load)
<b>Engines</b>	2 x 80 HP
<b>Hull</b>	Glass Fibber
<b>Superstructure</b>	Carbon Fibber
<b>Main deck, Structure</b>	Carbon Fibber
<b>Certification</b>	EU < 24 m
<b>Spars</b>	Carbon Fibber
<b>Main Sail</b>	132 m <sup>2</sup>
<b>Solent</b>	89 m <sup>2</sup>
<b>Staysail</b>	52 m <sup>2</sup>
<b>Code 0</b>	190 m <sup>2</sup>
<b>Spinnaker</b>	300 m <sup>2</sup>
<b>Guests &amp; Crew</b>	8 + 2
<b>Owner's cabin</b>	1
<b>Guest's cabins</b>	2 or 3



Rendering Linea Concept



Multihull



**OCEAN PEARL** Maxi Catamaran  
33.50 m 2000  
Location: Barcelona, Spain **2,490,000 €**



**PRINCE DE BRETAGNE** Ultim 80  
24.38 m 2012  
Location: Brittany, France **790,000 €**



**PELICANO** YC 80 Jouvert-Nivelt Design  
23.95 m 2005  
Location: Sète, South of France **890,000 €**



**TRITIUM** 72ft Ultime VPLP Design  
23.38 m 2002  
Location: California **495,000 US\$**



**LORD DICKIE** Velum 72  
22.00 m 2009, Refit 2018  
Location: Port Napoleon, South of France **590,000 €**



**RACE FOR WATER** MOD 70  
21.20 m 2011  
Location: Brittany, France **1,200,000 €**



**GP 70** GP 70  
21.00 m 2018  
Location: Portugal **P.O.A.**



**TOSCA** Moxie 61  
18.95 m 2011  
Location: Caribbean **1,350,000 €**



**ICE CAT 61 New** Cruising catamaran  
18.60 m 2019  
Location: Italy **P.O.A.**



**SILLY CAT** ICE CAT 61  
18.60 m 2018  
Location: Sète, South of France **1,490,000 €**



**GLAZMOR** Expedition Power Catamaran  
18.60 m 2009  
Location: Port Napoleon, South of France **590,000 €**



**AKRON AOTON** Orma 60  
18.28 m 1998  
Location: Greece **275,000 €**



Photo © Th. Martinez

## ◆ SALES INDEX ◆

## Motor Yacht



**SANSOUCCI STAR** Steel/Aluminium Large Motor Yacht  
53.53 m 1982  
*Location:* Sète, South of France **2,900,000 €**



**KRISS** Abeking & Rasmussen Built  
45.00 m 1974, Refit 2017  
*Location:* Malta **6,000,000 €**



**OCEAN SAPPHIRE** Norman Foster Design  
41.10 m 2010  
*Location:* Cannes, South of France **5,900,000 €**



**DONA DEL MARE** New Classic  
34.10 m 2006  
*Location:* Croatia **3,200,000 €**



**ABOU MAYA** Monte Fino 83  
25.29 m 1994  
*Location:* Marocco **290,000 €**



**PELICANO** YC 80 Jouvert-Nivelts Design  
23.95 m 2005  
*Location:* Sète, South of France **890,000 €**



**HALKIN** Mangusta 72  
1999  
*Location:* Menton, South France **490,000 €**



**GLAZMOR** Expedition Power Catamaran  
18.60 m 2009  
*Location:* Port Napoleon, South of France **590,000 €**



**DONA A** Andreyale 52  
16.60 m 2001  
*Location:* Toulon **500,000 €**



**MISTY** New Classic Commuter  
15.3 m 2013  
*Location:* France **290,000 €**



Sailing Yacht



**SOUTHERN STAR** SWS 78  
23.95m 2004  
Location: Montfalcone, Italy 1,800,000 €



**ARAGON** Reichel Pugh 72  
22.00 m 2006  
Location: Palma 1,250,000 €



**TARA BAY** Scorpio 72  
21.60 m 1991  
Location: Marseille, South France 390,000 €



**ENTHALPIA** Garcia Aluminium Ketch  
21.60m 1992|2015  
Location: Marseille, South of France 550 000 €



**MARY BLUE III** Garcia Yacht 65  
20.13 m 2008  
Location: Barcelona, Spain 695,000 €



**KALAO** Maxi Dolphin 65 - 2  
20.00 m 2003  
Location: Antibes, South France 690,000 €



**DYNASTY** Hanse 630  
19.80 m 2007  
Loc: Port St Louis du Rhône, South of France 490,000 €



**SUENO** ICE 62 with 2 years warranty  
18.82 m 2015  
Location: Sardinia, Italy 1,099,000 €



**LASSE** Bermudan Cutter Sloop  
18.28 m 1940  
Location: West Coast of France 310,000 €



**OMEGA** Oceanis 60  
18.24 m 2015  
Location: Perpignan, South of France 499,000 €



**GLAZ** Futuna 57  
18.00 m 2006  
Location: South of France 450,000 €



**LEVITHA** Azzuro 53  
16.85 m 2007  
Location: South of France 445,000 €



**MAPOTI** Sly 53  
16.00 m 2008  
Location: Marseille, South of France 395,000 €



**TOFINOU** Tofinou 16  
15.90 m 2018  
Location: Saint-Tropez, South of France 850,000 €



**MARGILIC** Wooden Classic Cutter Sloop  
14.64 m 1948  
Location: South of France 195,000 €



## ◆ SALES INDEX ◆

## Sailing Yacht



**ATLANTIC** New Classic Schooner Repliqua  
64.50 m 2010  
Location: Italy P.O.A.



**ELEONORA** Classic Gaff Schooner  
49.50 m 2000, Refit 2008  
Location: Spain P.O.A.



**MARIQUITA** William Fife III Design  
38.10 m 1911, Refit 2003  
Location: Lymington, England 2,750,000 €



**QUEEN SOUTH III** Oceangoing Ketch  
35.97 m 1999, Refit 2013  
Location : La Seyne, South of France 1,490,000 €



**NOMAD IV** Maxi Dolphin  
30.48 m 2013  
Location: La Seyne, South of France 5,900,000 €



**BLUE DIAMOND** Bermudian Sloop  
30.00 m 2004  
Location : Palma, Spain 2,700,000 €



**SOUTHERN CROSS** Maxi 88 Sloop  
29.70 m 1991/2004  
Location: Croatia 700,000 €



**WHIRLWIND** 90<sup>ft</sup> Holland Jachtbouw  
28.50 m 1998  
Location: Fréjus, South of France 1,290,000 €



**ACOA** 92<sup>ft</sup> Ed Dubois Ketch  
28.00 m 1985  
Location: Propriano, Corsica 1,335,000 €



**DARK STAR OF LONDON** Aluminium Centre Board Cutter Rig  
27.50 m 1982  
Location: Port Napoleon, South of France 790,000 €



**ZURBAGAN** Lifting Keel Sloop  
27.40 m 2006  
Location: Palma de Mallorca 1,400,000 €



**BENIGUET** Garcia 86 QR  
26.33 m 2005  
Location: Marseille, South of France 1,495,000 €



**SMART SPIRIT** Steel Ketch  
25.80 m 2004  
Location: Marseille, South of France 590,000 €



**THE PEARL** Farr Yacht Design Sloop  
24.50 m 1996  
Location: New Zealand 590,000 €



**WILD SALMON** Locwind 80  
24.00m 1997  
Location: Port Napoleon, South of France 450,000 €

Racing



**OCEAN PEARL** Maxi Catamaran  
33.50 m 2000  
Location: Barcelona, Spain 2,450,000 €



**NOMAD IV** Maxi Dolphin  
30.48 m 2013  
Location: La Seyne, South of France 5,900,000 €



**PRINCE DE BRETAGNE** Ultim 80  
24.38 m 2012  
Location: Brittany, France 790,000 €



**TRITIUM** 72ft Ultime VPLP Design  
23.38 m 2002  
Location: California 495,000 US\$



**ARAGON** Reichel Pugh 72  
22.00 m 2006  
Location: Palma 1,250,000 €



**RACE FOR WATER** MOD 70  
21.20 m 2011  
Location: Lorient, France 1,200,000 €



**HIGH SPIRIT** Botin 65  
20.00 m 2015  
Location: Valencia, Spain 2,900,000 €



**CHESSEA** Volvo 60  
19.50 m 1997  
Location: Sete, South of France 345,000 €



**AUSTRIAN ONE** Ex Imoca 60  
18.28 m 1995/2012  
Location: Split, Croatia 195,000 €



**COME IN VENDEE** Ex Imoca 60  
18.28 m 1997  
Location: West France 99,000 €



**GLOBE** Ex Imoca 60  
18.28 m 1992  
Location: Gdansk, Poland 130,000 €



**FURTIF<sup>2</sup>** Farr 52 Performance  
15.79 m 2002  
Location: Toulon, South of France 140,000 €



**COYOTE** Botin Carkeek 52  
15.50 m 2001  
Location: Marseille, South of France 195,000 €



# Charter

**B**GYB has successfully developed its charter activity and today we have a selection of some of the world's most magnificent yachts for charter. We have organised both private and corporate charters worldwide and we offer our clients impeccable standards of service.

Classic or contemporary, fast or tranquil, formal or friendly, the BGYB charter team will find you the best yacht for your charter requirements. Once you have decided on the type of charter that you wish to experience, the BGYB charter team will put all their efforts into finding the best yacht and the best destination for your needs.

## BGYB assets:

- Identifying and understanding exact requirements.
- Providing numerous choices.
- Suggesting cruising itineraries.
- Corporate Event/ Team Building.
- Delivering the experience.

## DESTINATIONS

West Mediterranean	East Mediterranean	Caribbean	Pacific Ocean	Indian Ocean	Other Destinations
- French Riviera	- Greece	- Leeward Islands	- Polynesia	- Maldives	- South East Asia
- Corsica & Sardinia	- Croatia	- Les Antilles	- Galapagos Islands	- Seychelles	- South America
- Italian Riviera	- Montenegro	- Windward Islands	- Fiji		- Scandinavia
- Sicily	- Turkey	- Cuba	- New Zealand		(Norway, Sweden, Finland)
- Aeolian Islands	- Malta	- Panama			
- Balearic Islands					- Spitzberg
					- Iceland
					- Greenland

Photo © Bluelprod/ S/CAT CURANTA CRIDHE

Nautors Swan 115 FD  
**SHAMANNA**



Photos © Kurt Aringa



Photos © Eve-Sine Kjellman

**THE QUINTESSENTIAL RACER CRUISER: Optimal Performance, Unrivalled style**

SHAMANNA, the latest Swan 115 FD, is the ultimate pedigree sailing yacht. The true sailor's choice, Nautor's distinguished yard have been designing and building luxurious, high performance yachts for close to half a century, successfully combining cutting edge technology with a strong boatbuilding heritage conserved by Finland's most skilled craftsmen. The level of comfort to be found on this Swan 115 is seldom encountered on a sailing yacht without jeopardizing speed and racing performance.

The new hull shape designed by German Frers, with its plumb bow, wide stern and twin rudders to increase responsiveness, has high performance as a priority. On deck, SHAMANNA is exceptionally uncluttered offering uninterrupted views across the water with a large forward cockpit seating area for relaxing. The comfy sunbathing seats and beanbags are also ideal to make you enjoy the moment whilst at sea. The Scandinavian-style interior has a fresh and contemporary atmosphere. All the essentials for modern living are included yet subtly integrated within the design. SHAMANNA comfortably accommodates up to 8 guests in a well-appointed master cabin, a double cabin and two twin cabins with Pullman berths. All cabins have spacious shower ensembles.

For the water sport enthusiasts, guests can enjoy a relaxing tour on the SUP's or kayaks or enjoy the thrill of water skiing and wakeboarding towed by a powerful Williams Sportjet 460 tender.

Her well renowned crew is longstanding with the Owner. A team of five, they are not only an excellent charter friendly crew but are passionate sailors with extensive experience worldwide.

This Swan unabashedly offers excellence for everyone, from the adrenaline junkie to the laid back cruiser. So whether you want to race round the islands or cruise around the world, this super yacht will rise to any occasion.



Year: **2016**

Naval Architect : **Frers Naval Architectures & Engineering**

Builder : **Nautor's Swan**

Hull Construction : **Composite**

Length : **35.20 metres**

Beam : **8.12 metres**

Draft : **5.8 metres**

Number of Guests : **6**

Number of Crew : **5**

◆ NEW CHARTER DESTINATION ◆

En Route to French Polynesia!

100ft Finot Conq Design  
**nomad IV**



**BGYB is delighted to present a unique opportunity aboard NOMAD IV in the French Polynesia...**  
It's a charter experience not to be missed. A journey that will allow you to discover the hidden pearls of the famous south pacific islands. Cruising in the French Polynesia aboard NOMAD IV will give you a taste for adventure whilst surrounded by every comfort and luxury possible.

**NOMAD IV is a sailing yacht with cutting-edge characteristics that set her apart from other 100 footers today.**

The world-renowned naval architects Finot-Conq have an enviable reputation within the sailing world; among their previous racing builds are IMOCA 60s and their latest creation is the 100ft cruiser S/Y NOMAD IV. She is probably the fastest 100' performance cruiser in the world, as well as being a very comfortable yacht for luxury family charter. She has aesthetic proportions: the wide chinned hull; a low and wide coachroof; an extremely wide cockpit for a radical exterior style.

**Key Features:**

- A very wide yacht which is comfortable at sea
- All cabins are very spacious and well-lit
- Each cabin has an en-suite bathroom
- Little heeling with her ballast (Max 10° intended)
- Two 12 person dining tables which transform into sunbathing areas
- Deck saloon with a 360° panoramic view
- Performance yacht with the sensation of speed and power
- 3.50m retractable keel which allows access to shallow anchorage
- Garage equipped with an abundance of toys and a bathing platform and ladder
- Hard chine carbon racing hull design
- Yacht equipped with state of the art technology

**NOMAD IV**

Type: **Maxi Dolphin FC100**  
Naval architect: **Finot-Conq**  
Year/Refit: **2013/2019**  
Length: **30.48 m**  
Beam: **8.30 m**  
Draft: **3.50/5.90 m**  
Guests: **12** - Crew: **4**

Photos © Richard Sprang



**NOMAD IV will be available for spring and summer charters in the French Polynesia from the: 8th April 2020**

**French Polynesia** .....



**The Islands in the South Pacific are some of the most unspoilt and most beautiful locations in the world.**  
Why not experience the Marquesas Islands, following in the footsteps of Gaugin and Brel? The captain could take you to his favourite bay: Hanvavae, on the island of Fatu Hiva. You'll be in impressive company, the island having served as inspiration for Robert Louis Stevenson's 'Treasure Island'. Then perhaps you may wish to spend a few days in the Tuamotus Islands or turn towards the Polynesian Leeward Islands. Bora Bora is of course the favourite but there's also Taha'a, the Vanilla Islands or Huahine, it's really up to you!



135<sup>ft</sup> Motor Yacht

# OCEAN SAPPHIRE



This modern private luxury yacht, designed by Norman Foster, has four deck levels, offering more exterior and interior space than any other yacht in her category.

Special attention has been paid to the quality of light and aspect with all major areas of the yacht, including the master suite's two private balconies which benefit from spectacular forward-facing views.

The interiors have been furnished with great attention to aesthetics, practicality and luxury. Taking advantage of the floor-to-ceiling windows and panoramic views, a sense of continuity between the outside and the interior spaces has been intuitively created.

Now authorised to welcome up to 100 guests at quay!  
The perfect yacht for hosting during events in the South of France such as the Cannes Film Festival and the Monaco Grand Prix.

Photos © Nigel Young/Foster + Partners

Year: 2010

Designer: Foster and Partners

Builder: Rodriguez Cantieri Navali

Type: Signature 40 Aluminium  
Displacement Motor Yacht

Length: 41 metres

Beam: 8.40 metres

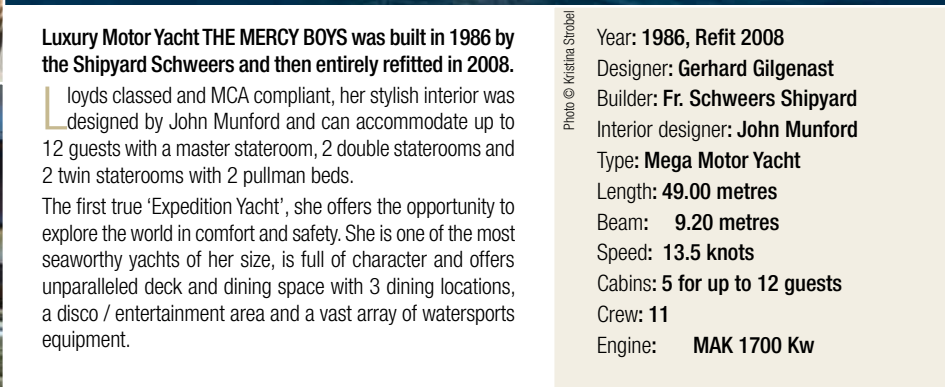
Speed: 12 to 16 knots

Number of cabins: 5 for up to 12 guests

Crew: 7



## ◆ CHARTER ◆

Mega Motor Yacht  
**THE MERCY BOYS**

**Luxury Motor Yacht THE MERCY BOYS was built in 1986 by the Shipyard Schweers and then entirely refitted in 2008.**

loyd's classed and MCA compliant, her stylish interior was designed by John Munford and can accommodate up to 12 guests with a master stateroom, 2 double staterooms and 2 twin staterooms with 2 pullman beds.

The first true 'Expedition Yacht', she offers the opportunity to explore the world in comfort and safety. She is one of the most seaworthy yachts of her size, is full of character and offers unparalleled deck and dining space with 3 dining locations, a disco / entertainment area and a vast array of watersports equipment.

Photo © Kristina Strobel

Year: **1986, Refit 2008**  
 Designer: **Gerhard Gilgenast**  
 Builder: **Fr. Schweers Shipyard**  
 Interior designer: **John Munford**  
 Type: **Mega Motor Yacht**  
 Length: **49.00 metres**  
 Beam: **9.20 metres**  
 Speed: **13.5 knots**  
 Cabins: **5 for up to 12 guests**  
 Crew: **11**  
 Engine: **MAK 1700 Kw**

**2002** - Length: **30.45 m** - Guest/Crew: **6/5**  
**Wally yacht DARK SHADOW is a 30 m (100ft) high-performance cruising yacht that is instantly recognizable with her sleek lines and her pure, contemporary design.**  
 This makes her one of the most sought after yachts on the regatta circuit with her impressive racing pedigree and Wally credentials. However, DARK SHADOW is just as capable of being the ideal charter for a family holiday as she easily converts into a comfortable and relaxing cruising yacht. This flexibility, matched with her stunning interior, has made her an extremely popular vessel for any sort of charter.

Photos © Marc Paris

Wally Yachts  
**DARK SHADOW**



*Available in the Caribbean  
this winter*



78ft S/CAT  
**TAJ**



*Available in the Caribbean  
this winter*



**2003/Refit 2018** - Length: **24.00 m** - Guest/Crew: **6/3**

Photos © Richard Sprang

**TAJ is a fast and light catamaran, built of Epoxy glass fibre and carbon structure. Her design is minimalist and she is built for comfort with all charter amenities on board. She is a safe boat capable of 300-350 miles passage per day.**

She is designed to give a real sailing experience while ensuring maximum comfort. The transverse structure and mast are of carbon fiber in order to keep her strong but light. She is easy to handle with electrical winches, twin helms and a clear view over the coach roof from the cockpit. Her salon offers a fantastic 360° panoramic view and there is dining spaces indoors as well as outdoors for 12.

**2018** - Length: **17.80 m** - Guest/Crew: **6/3**

**With its unrivalled living space, intelligent design and dynamic performance, the new Flagship catamaran Ipanema 58 delivers a luxury cruising experience without compromise.**

Designed to comfortably share simple day trips or long-haul cruises with family or friends, the Ipanema 58 features a myriad of decadent and spacious areas in which to relax. Host long lazy lunches in the stunning 25m2 cockpit comfortably accommodates every guest on board the yacht, and then unwind on the inspired modular sunbathing deck on the catamaran's expansive foredeck.



Ipanema 58  
**ARAOK**



*Available in the Caribbean  
this winter*



◆ CHARTER ◆



Pendennis 95  
**MARGARET ANN**

**2004/Refit 2013** - Length: **29.15m** - Guest/Crew: **8/4**  
**Margaret Ann is a classic style 95.5 foot sailing yacht able to sleep up to 8 guests as well as the 4 reliable and capable crew members.**

The yacht has a full complement of electronics and equipment for luxurious, comfortable and safe global cruising. Its history of Atlantic crossings, European sailing and cruising in the Caribbean are a testament to its adaptability, true quality of build and optimising design.



**2012/Refit 2016** - Length: **48.50 m** - Guest/Crew: **11/7**  
**157<sup>ft</sup> DWINGER is unique; a magnificent, innovative sailing yacht built by Royal Huisman.**

Such is her stability and seaworthiness that she is capable in sailing in a variety of waters, and she has just returned from a season in the Far North. Her customised interior includes a galley which lies open to the dining area allowing the chef to put on a culinary show for the guests each day, while the extensive outside covered spaces provide plentiful scope for events on board. She can welcome 11 guests in 5 ensuite double cabins.

Photos © Richard Sprang

Expedition sailing yacht  
**DWINGER**



Maxi Catamaran  
**MAGIC CAT**



**1996/Refit 2018** - Length: **25.00 m** - Guest/Crew: **8/4**  
**Sailing catamaran MAGIC CAT isn't just any mass-produced yacht.** MAGIC CAT's performances are well known by the experienced sailors. This catamaran was designed by Gilles Oliver and built by the Multiplast Shipyard, where the fastest racing catamarans on the planet, "ORANGE 2" and "GROUPAMA 3", were also constructed! MAGIC CAT will captivate sailing enthusiasts, who will be charmed and surprised by the sensations at the helm. The design and refined style of MAGIC CAT will delight you; her comfort,

Photos © Eric Pniel

stability and safety will guarantee you will feel at ease on board.



**2017/ Refit 2018** - Length: **18.90 m** - Guest/Crew: **8/3**  
**Designed by renowned architects Van Peteghem and Lauriot Prévost (VPLP) in association with the Lagoon shipyard, the 620 is an innovative catamaran designed to suit the needs of yachtsmen looking for a relaxing cruise in the most luxurious of surroundings.**

Ultimate tranquility is assured with the guest areas set far from the insulated engine housing, and the Nauta Yachts-designed interior featuring comfortable sofas and armchairs in the saloon, and a Bose home cinema, ensures each guest will feel fully relaxed. A light and airy atmosphere is created by the large windows giving panoramic views. MELARNIE has 4 comfortable and well-appointed guest cabins, each with an ensuite bathroom.

Photos © Le Studio Photo

Lagoon 620  
**MELARNIE**



1983/Refit 2015 - Length: 27.43 m - Guest/Crew: 8/4  
**WHITEFIN** was designed by Californian Bruce King. The result is an exquisitely proportioned mix of agility, lightness and grace. Whitefin was given a complete refitting in January 2015.

The centre of life on board is the open space area in the wider part of the boat which includes the galley, partially recessed, the nav station, the bar and the saloon with fireplace and piano.

The boat layout consists of four cabins: the owner suite, all aft; the VIP guest cabin with a queen size bed and two guest cabins, with two single beds each.

Classic Yacht  
**WHITEFIN**



Photos © Arny North



82ft JFA  
**IKIGAI**



2001/Refit 2018 - Length: 25.13 m - Guest/Crew: 6/3

**IKIGAI** was recently refitted and refurbished at Vitters Shipyard in what was effectively a complete rebuild.

The spacious, modern and welcoming interior is fashioned from clear varnished teak. The large master cabin and two guest cabins are situated forward. Amidships are the spacious saloon and dining room. Behind the companionway you will find, to port, the brand new high-tech navigation station, the chart table and the crew cabin; and to starboard, the galley and crew mess. The transom opens to give access to the garage where the tender is stored. Sailing Ikigai is an absolute joy: sensational to helm, she is simply fantastic upwind.

2010/Refit 2015 - Length: 25.10 m - Guest/Crew: 7/3  
**AEGIR**, the 82 feet Maxi-Yacht built by Carbon Ocean, is a comfortable and luxurious cruiser capable of transforming into a weapon on the race track.

Light, strong, fast and sharp on the water, she can also turn into an ideal blue water cruising yacht, offering excellent comfort and all the amenities of high standard sailing style, with 2 double cabins forward and one triple cabin with single beds, a large saloon, a comfy cockpit table for up to 8 guests and a large sunbed area on an open transom.

Finishing 1st in IRC 1 at the Palma Vela Regatta in 2017, AEGIR has proven once again her full potential on the Maxi Racing Circuit!

Maxi-yacht 82  
**AEGIR**

Photo © Bluebird



◆ CHARTER ◆

2001/Refit 2018 - Length: 24.89 m - Guest/Crew: 8/3  
**The Swan 82 Kallima (Ex Alpina) is an updated model of the Maxi-cruiser concept.**

She is the result of accumulated knowledge and experience, drawn afresh. The vessel is a modern sailing yacht which has been built for speed, yet retains the company's high standards and style: elegant lines, luxurious interiors, ease of handling and reliability. Her streamlined hull and practical deck layout mask a comfortable interior and a wealth of technology, which combine to offer outstanding long range cruising performance. Complete refit in 2018!



2001/Refit 2011 - Length: 23.99 m  
 Guest/Crew: 7/3  
**This 80 footer cruiser-racer is suitable both for coastal or blue-water cruises and is the ideal choice for a luxury charter for family and couples.**

Built in carbon composite, she stands out for her light displacement which means exciting performance sailing even in light Med breezes. In 2011 and 2015 she benefited from intensive refits managed by the Southern Wind Customer Care team, including but not limited to: engine, generator and propeller replacement, rigging substitution and upgrading to Carbon EC6+...

Photos © Foto Arcobaleno



1995/Refit 2015 - Length: 24.00 m - Guest/Crew: 6/3  
**Exceptional and relentless sailing yacht.**

One of the first and finest WALLY designs with pure German Frers lines. Not only is she high-performing, but is also capable of welcoming guests with all possible luxuries.

WALLY Tender, 'The Lamp' is also available for charter with the yacht upon request.



Photos © Gilles Martin-Regel





83ft Aluminium sloop  
**DJANGO TOO**

1991/Refit 2007 - Length: 25.00m - Guest/Crew: 8/3  
**DJANGO TOO is a magnificent 83ft sloop designed by Jacques Fauroux and built of aluminum by Trehard shipyard for a very demanding and experienced owner. She has been regularly refitted.**

She boasts great accommodation for up to 8 guests in 4 double ensuite cabins in great comfort. She is a performance yacht, sails brilliantly and has a good charter record. Her shallow draft allows her to sail easily into ports and to access the most beautiful creeks imaginable.



1992/Refit 2015 - Length: 21.60 m - Guest/Crew: 8/3  
**She was built in 1992 by the Garcia Shipyards and designed by Philippe Harlé, whose reputation is long established in the world of sailing yachts.**

ENTHALPIA is characterised by several points: her exceptional sailing qualities; an extremely agreeable and comfortable interior layout furnished with traditional varnished woodwork; and the sense of great comfort on board.

ENTHALPIA is a centerboarder, meaning she can take you to wonderful places unknown of and out of bounds to other yachts.

Photo © Bluebird



Aluminium ketch  
**ENTHALPIA**



Narcira 67  
**SHAMLORE**

2012/Refit 2015 - Length: 22.40 m - Guest/Crew: 6/2  
**Luxury cruising and racing on a open 60 naval architecture concept.**

The luxury yacht DREAM 67 SHAMLORE stands out thanks to her superior performance, a result of the extremely high-quality construction standards upheld by her shipbuilder Maxi Dolphin. Like a luxury fast car, equipped with the best racing engines, wheels and systems, SHAMLORE boasts the latest technologies,

Photo © Bluebird



meticulous engineering, and constant attention to economizing on weight throughout the project.

2015 - Length: 18.82 m - Guest/Crew: 6/2

The Ice 62 SUENO is an evolution of the proven 61 model by Felci, who has excelled in numerous international regattas, including the legendary Atlantic Rally for Cruisers (ARC). All the materials, construction, components and equipment on Ice 62 are engineered, designed and built to provide maximum safety and durability. Her interior is designed in a clean and modern style to provide a luxurious and refined environment. The concept of the boat and her manufacturing care are optimized to create the most enjoyable and comfortable performance boat for either cruising or racing.



Ice 62  
**SUENO**

◆ RACING CHARTER ◆



Alongside our normal charter activity, we also specialize in Racing Charters on a wide range of classic and modern sailing yachts, and superyachts for events such as the Saint Barths Bucket, the Maxi Yacht Cup in Porto Cervo and Les Voiles de Saint-Tropez.

Certain yachts are also available for offshore races including the Rolex Middle Sea Race, the RORC Caribbean 600 and the Maxi Transatlantic Race.

For each event and each class there is a range of different racing yachts to satisfy your requirements : the exclusive Wally & Gentleman Class, the Majestic Classics, and the uncompromised Extrem racing yachts and multihulls.

Racing is about passion for sailing, competitiveness and teamwork but, above all, pleasure.



2010 /Refit 2015 - Length: 25.10 m - Guest/Crew: 7/3  
**AEGIR, the 82 feet Maxi-Yacht built by Carbon Ocean, is a comfortable and luxurious cruiser capable of transforming into a weapon on the race track.**

Light, strong, fast and sharp on the water, she can also turn into an ideal blue water cruising yacht, offering excellent comfort and all the amenities of high standard sailing style, with 2 double cabins forward and one triple cabin with single beds, a large saloon, a comfy cockpit table for up to 8 guests and a large sunbed area on an open transom.

Finishing 1st in IRC 1 at the Palma Vela Regatta in 2017, AEGIR has proven once again her full potential on the Maxi Racing Circuit!



Maxi-yacht 82  
**AEGIR**



77ft Racing Trimaran  
**ULTIM EMOTION**

2001 - Length: 23.38 m - Guest/Crew: 12/3

This is the first and only time that such a unique maxi trimaran can be privately chartered either for day sailing, regattas and team building. ULTIM EMOTION will also be available to compete in a host of prestigious racing events throughout the year, including the Caribbean RORC 600, Rolex FASTNET, Rolex Middle Sea Race, RORC Transatlantic Race, Les Voiles de St Tropez and numerous others.



Reichel Pugh 72  
**ARAGON**

2006. Reichel Pugh design built in carbon Nomex by Yachting Developments, **ARAGON ex Pinta 05 is a fantastic cruiser racer with outstanding performances for the Mediterranean conditions.** The most advanced concepts of pre-preg carbon fibre materials were used, resulting in a hull, deck and structure that meets the high standard that all racing yachts from the drawing board of Reichel Pugh are renowned for. This ensures lightweight characteristics and complements a hull shape that contributes to a swift and agile, yet comfortable and robust ride.

**Motor Yacht**

*Winter 2019 Charter Rates (MYBA terms)*



**Name: CHRISTINA O** Length: 99.13 m  
Guest/Crew: 34/38 Area: Caribbean  
Rate (high/low): 700,000 €/week



**O'MEGA** 82.50 m  
30/28 Caribbean  
480,000/450,000 €/week



**TITANIA** 73.00 m  
12/21 Caribbean  
635,000/495,000 USD/week



**SERENITY** 72.00 m  
28/30 Arabian Gulf, Indian Ocean, Red Sea  
550,000 €/week



**SHERAKHAN** 69.65 m  
26-28/19 Caribbean  
425,000/390,000 €/week



**LIGHT HOLIC** 60.00 m  
12/15 Caribbean  
360,000/320,000 €/week



**SANSSOUCI STAR** 53.50 m  
12/8 West & East Mediterranean  
70,000 €/week



**HALAS** 52.00 m  
24/17 Turkey  
122,500/108,500 €/week



**BROADWATER** 50.29 m  
12/12 Caribbean  
280,000/260,000 €/week



**AMARULA SUN** 50.00 m  
12/9 Bahamas, Florida and Caribbean  
230,000/195,000 USD/week



**MOSAIQUE** 49.90 m  
12/12 Caribbean  
180,000/160,000 USD/week



**THE MERCY BOYS** 48.60 m  
12/11 West & East Mediterranean  
106,250/93,750 €/week



**HANSE EXPLORER** 47.76 m  
12/14 South America and Antartic Peninsula  
155,000/135,000 €/week



**TATIANA** 44.90 m  
12/9 East & West Mediterranean  
165,000/150,000 €/week



**COSTA MAGNA** 44.50 m  
10/8 West Mediterranean  
96,000/90,000 €/week

◆ CHARTER INDEX ◆

Winter 2019 Charter Rates (MYBA terms)



**DIANE** 43.00 m  
10/8 Spain, Balearic Islands  
150,000/135,000 €/week



**BINA** 43.25 m  
12/9 West Mediterranean  
175,000/150,000 €/week



**DAYDREAM** 42.60 m  
10/7 Northern Europe  
99,000/89,000 €/week



**DE LISLE III** 42.00 m  
9/7 South Pacific  
125,000 USD/week



**OCEAN SAPPHIRE** 41.00 m  
12/7 West Mediterranean  
110,000/90,000 €/week



**DHAANKAN'BAA** 40.00 m  
14/17 Maldives  
95,000/85,000 USD/week



**W** 39.62 m  
10/7 Bahamas, Florida  
145,000/135,000 USD/week



**SWEET ESCAPE** 39.62 m  
12/8 Bahamas  
115,000/99,000 USD/week



**AZALEA** 38.75 m  
18/13 Maldives  
49,000 €/week



**MAYAMA** 37.00 m  
10/6 West Mediterranean, Croatia  
99,000/85,000 €/week



**PARIS A** 35.00 m  
12/6 East Mediterranean  
73,000/63,000 €/week



**LADY EMMA** 34.10m  
8/4 West Mediterranean  
72,000/69,000 €/week



**Sailing Yacht**

Winter 2019 Charter Rates (MYBA terms)



**Name: DRUMBEAT** Length: 53.00 m  
Guest/Crew: 11/10 Area: Tahiti  
Rate (high/low): 175,000 USD/week



**TRINAKRIA** 49.06 m  
10/8 West Mediterranean  
80,000/70,000 €/week



**DWINGER** 48.50 m  
11/7 Balearics, Spain  
75,000/70,000 €/week



**HYPERION** 47.42 m  
6/8 East/West Mediterranean  
112,000/91,000 €/week



**HEUREKA** 45.00 m  
6/6 East/West Mediterranean  
93,500/82,500 €/week



**VAIMITI** 39.20 m  
8/5 Caribbean  
65,000 €/week



**TWILIGHT** 38.10 m  
8/6 Caribbean  
90,000/80,000 USD/week



**BLISS** 36.70 m  
10/5 Caribbean  
91,000/82,000 USD/week



**WHISPER** 35.40 m  
6/5 Caribbean, New England  
65,000/60,000 USD/week



**SHAMANNA** 35.20 m  
6/5 East/West Mediterranean  
80,000 €/week



**CHE** 34.70 m  
8/6 Caribbean  
85,000/75,000 €/week



**THALIMA** 33.70 m  
10/5 West Mediterranean  
64,000/58,000 €/week



**AMADEUS** 33.50 m  
12/6 Greece  
45,500/38,500 €/week



**MOONBEAM IV** 32.00 m  
6/6 West Mediterranean  
39,000 €/week



**NOMAD IV** 30.48 m  
12/4 French Polynesia  
56,000/52,000 €/week



◆ CHARTER INDEX ◆

Winter 2019 Charter Rates (MYBA terms)



**LEOPARD** 30.50 m  
8/5 West Mediterranean  
48,000 €/week



**DARK SHADOW** 30.45 m  
6/4 Caribbean  
45,000/40,000 €/week



**FAR & WIDE** 30.20 m  
8/4 East/West Mediterranean  
50,000/46,000 €/week



**MARGARET ANN** 29.10 m  
8/4 East/West Mediterranean  
40,000/37,000 €/week



**GRAND BLEU VINTAGE** 29.00 m  
8/4 East & West Mediterranean  
43,000/39,000 €/week



**WINDFALL** 28.64 m  
9/4 Northern European  
45,000/40,000 €/week



**WHITEFIN** 27.43 m  
8/4 West Mediterranean  
28,500/25,500 €/week



**VINTAGE** 27.00 m  
8/3 Caribbean  
19,500/17,500 €/week



**WALLY ONE** 25.30 m  
8/3 West Mediterranean  
24,000/18,000 €/week



**IKIGAI** 25.13 m  
6/2 Caribbean/Mediterranean  
32,000/28,000 €/week



**AEGIR** 25.10 m  
7/3 West Mediterranean  
32,000/27,000 €/week



**MAGIC CAT** 25.00 m  
8/4 West Mediterranean  
35,000 €/week



**DJANGO TOO** 24.98 m  
8/3 West Mediterranean  
22,000/18,000 €/week



**KALLIMA** 24.89 m  
6/3 West Mediterranean  
25,000 €/week



**ELISE WHISPER** 24.00 m  
8/3 West Mediterranean  
25,000 €/week



**GENIE** 24.00 m  
6/3 West Mediterranean  
24,000 €/week



**SKIP'N BOU** 24.00 m  
6/3 Mediterranean  
28,000/24,000 €/week



**TAJ** 24.00 m  
6/3 Caribbean  
31,000/27,000 €/week



**ULTIM EMOTION** 23.40 m  
6-12/2 West Mediterranean  
35,000 €/week



**MARICEA** 23.26 m  
8/3 West Mediterranean  
11,000 €/week



**SHAMLOR** 22.40 m  
6/2 West Mediterranean  
16,000/15,000 €/week



**ARAGON** 22.00 m  
6/2 West Mediterranean  
35,000 €/week



**ENTHALPIA** 21.60 m  
8/3 East/West Mediterranean  
15,000/12,000 €/week



**LA PERLA** 20.60 m  
6/2 Balearic Islands  
23,000/18,000 €/week



**MELARNIE** 18.90 m  
8/3 West Mediterranean  
28,000/26,000 €/week



**SUENO** 18.82 m  
6/2 West Mediterranean  
15,000 €/week



**NO LIMIT** 18.30 m  
6/2 Caribbean  
18,000/16,000 €/week



**AKRON AOTON** 18.28 m  
6/3 Greece  
P.O.A



**ARAOK** 17.80 m  
8/2 West Mediterranean & Caribbean  
28,000/24,000 €/week



**CURANTA CRIDHE** 15.30 m  
6/2 West Mediterranean  
16,000/15,000 €/week

◆ UPCOMING EVENTS ◆

★ **Cannes Yachting Festival**  
10–15<sup>th</sup> September 2019

The Cannes Yacht Show takes place every September in the elegant and luxurious surroundings of the sparkling waters of Cannes bay. As the first show in the boating season, this show is Europe's leading in-water yachting event. The major players in pleasure yachting come here to launch their show season in style by showcasing their new worldwide models. With 542 exhibitors, 638 boats and over 51 000 visitors, this promises to be an unforgettable event.

**NEW SAILING AREA in PORT CANTO.** In 2019, the Yachting Festival will bring together all sailing boats, monohulls and multihulls in a single dedicated and fitted port. With more than 100 sailing boats in Port Canto, the Yachting Festival will be the world's largest in-water exhibition of large sailing boats, offering the best experience for sailing enthusiasts and buyers. Port Canto will continue to host the "Brokerage" area for second-hand boats from 22+ metres and the "Toys" area.

The Vieux Port will be dedicated to the nautical motor industry. You will also find there, the many luxury and lifestyle showrooms on display inside the Luxury Gallery.



*This year BGYB will exhibit BLUE DIAMOND in Port Canto (stand BROKER 045)*

*WHIRLWIND will at anchor in the Bay of Cannes. A tender service will be available to bring you aboard for viewings.*



★ **Monaco Yacht Show**  
25–28<sup>th</sup> September 2019

Set in the iconic Port Hercules of the Principality of Monaco since 1991, the Monaco Yacht Show is the only place to admire, visit and purchase around 125 extraordinary one-off superyachts built by the world's most respected shipyards. 40 new launches are unveiled in world premiere at every edition.

With 580 exhibiting companies and partners participating in the Monaco Yacht Show, the discerning yacht-lover will discover, amongst the world leading luxury yachting companies, the trendiest superyacht builders, yacht designers, luxury manufacturers and the most important brokerage houses.

The Monaco Yacht Show is the one and only occasion in the year - and in the world - to discover the greatest superyachts on offer in the unrivalled glamour of Monaco.

★ **Les Voiles de Saint-Tropez**  
28<sup>th</sup> September – 06<sup>th</sup> October 2019

Les Voiles de Saint Tropez is the major sailing event of the year; an unmissable highlight of the race calendar that is masterfully orchestrated by the Société Nautique de Saint-Tropez for a selection of the finest traditional and modern yachts in the world, combining a subtle mix of latest generation yachts and those dating back to well over a hundred years, as well as bankable names and new additions to the fleet.

A number of top-flight skippers and racers, from the offshore racing scene to the America's Cup, will be competing in Saint-Tropez. Among the many stars will be Sébastien Josse, Philippe Monnet, Marc Pajot, Bruno Peyron, Lionel Péan and Marie Tabarly, to name but a few, all brought together by their love of beautiful yachts, classic and modern alike, and their delight in seeing such a variety of yachts being sailed together in such an atmosphere of fair play and conviviality.

*The following yachts which will be based in the bay of St-Tropez all week: KALLIMA, DJANGO TOO, GENIE, ARAGON, BLUE DIAMOND, WHIRLWIND, DARK SHADOW, ENTHALPIA*



► FRANCE

Montpellier, Head Office



**Bernard GALLAY** - CEO  
+33 (0)6 86 67 80 24 - [bernard.gallay@bernard-gallay.com](mailto:bernard.gallay@bernard-gallay.com)  
• Founded the company in 1994, MYBA Member since 1996  
• Experienced skipper: 2 Vendée Globe in 1992 & 2000  
• America's Cup in 1986/1987



**Bruno GALLIEN** - Broker  
+33 (0)6 82 11 96 00 - [bruno.gallien@bernard-gallay.com](mailto:bruno.gallien@bernard-gallay.com)  
• Yacht broker with BGYB since 1999



**Lisa SPILLER** - Charter Manager  
+33 (0)6 33 42 45 09 - [lisa.spiller@bernard-gallay.com](mailto:lisa.spiller@bernard-gallay.com)  
• Charter Manager with BGYB since 2007  
• MYBA Individual member since 2011



**Paris**  
**François BOUCHER** - +33 (0)6 82 83 19 21  
[paris@bernard-gallay.com](mailto:paris@bernard-gallay.com)  
• Yacht Broker with BGYB since 2008  
• Ocean racer skipper & Yacht captain for years  
• Project manager for custom yacht construction



**La Ciotat**  
**Stéphane DELLA** - +33 (0)6 82 79 08 61  
[la.ciotat@bernard-gallay.com](mailto:la.ciotat@bernard-gallay.com)  
• Yacht broker with BGYB since 2013  
• Extensively well known and experienced Technical, Fleet, Shore & Project Manager with companies such as Nahema, Compositeworks France, CIM shipyard and several Turkish shipyards

► MONACO



**Philippe MONNET** - +33 609 01 97 84  
[monaco@bernard-gallay.com](mailto:monaco@bernard-gallay.com)  
• For the last 4 years, he has managed the Roxy sailing yacht with his Posséidon team for the Vendée Globe  
• Yacht construction consultant  
• Extremely wide ranging experience and expertise in the sector

► MOSCOW



**Oscar KONYUKHOV** - +7 910 477 09 70  
[russia@bernard-gallay.com](mailto:russia@bernard-gallay.com)  
• BGYB representative in Moscow since 2007  
• Over all – 3 Round the world campaigns as a Project Manager and PR officer

► PALMA DE MALLORCA



**Jean-Yves CANDLOT** - +34 619 05 64 19  
[palma@bernard-gallay.com](mailto:palma@bernard-gallay.com)  
• BGYB representative in Palma since 2008  
• With over 26 years of sail and motor yacht navigation experience



**Morgane CANDLOT** - +34 619 05 64 19  
[palma@bernard-gallay.com](mailto:palma@bernard-gallay.com)  
• Studied International Management for 4 years  
• Yacht Agent since 2015

► ITALY



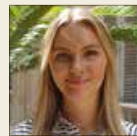
**Andrea Caracci** - +39 335 763 90 77  
[andrea.caracci@bernard-gallay.com](mailto:andrea.caracci@bernard-gallay.com)



**Nicolas MARCHAND** - Sales Manager  
+33 (0)6 83 47 01 96 - [nicolas.marchand@bernard-gallay.com](mailto:nicolas.marchand@bernard-gallay.com)  
• Yacht broker with BGYB since 2006  
• Yacht Manager & Cannes University Lecturer (Yachting)  
• Experienced sailor: Mini Transat 2005, Jacques Vabre 2007, 5 Mini Fastnet double handed Race



**Audrey Lucas** - Brokerage assistant  
+33 (0)4 67 66 39 93 - [assistant@bernard-gallay.com](mailto:assistant@bernard-gallay.com)  
• Brokerage Assistant for Head Office, Montpellier  
• Manages the listings, specifications and viewings



**Grace Gardner** - Charter assistant  
+33 (0)4 67 66 39 93 - [charter@bernard-gallay.com](mailto:charter@bernard-gallay.com)  
• Charter Assistant for Head Office, Montpellier



**Antibes**  
**Youri LOOF** - Yacht Broker  
+33 (0)6 88 96 11 50 - [youri.loof@bernard-gallay.com](mailto:youri.loof@bernard-gallay.com)  
• Yacht Captain for 10 years on Swan, Royal Huisman & Alloy Yachts  
• BGYB Sales & Charter Broker since 2014

► HONG-KONG



**Thierry BAROT** - +852 9549 5135  
[asia@bernard-gallay.com](mailto:asia@bernard-gallay.com)  
• BGYB representative in Hong-Kong since 2008  
• Service manager for Simpson Marine in HK  
• Construction Management of Cortenzo 26M in China at DHS shipyard

► USA - California



**Sylvain Barielle** - +1 510 872 6894  
[california@bernard-gallay.com](mailto:california@bernard-gallay.com)  
• Sails maker in San Francisco  
• He has participated in several America's Cup Events

► SWITZERLAND



**Patricia Jacquod** (Schmidt Yachting)  
+41 76 340 37 57  
[switzerland@bernard-gallay.com](mailto:switzerland@bernard-gallay.com)

► AUCKLAND



**Guillaume GOSSE** - +64 221 83 46 90  
[auckland@bernard-gallay.com](mailto:auckland@bernard-gallay.com)  
• Yacht Captain for 15 Years  
• Runs Metco Group, NZ based Marine Consultancy  
• Worked alongside BGYB since 2010

**BERNARD GALLAY YACHT BROKERAGE**

France (Head Office): Montpellier - 1, rue Barthez - 34000 Montpellier

Tel +33 467 66 39 93 - [info@bernard-gallay.com](mailto:info@bernard-gallay.com)

